

# Connectors for Consumer Fitness Tracker

## ① Display, Buttons, Sensors, Any connection

Standard ZIF  
Pitch=0.5mm



**FH34 Series**

Low profile ZIF  
Height=0.5mm



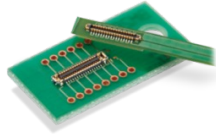
**FH64MA Series**

High density ZIF  
Pitch=0.2/0.25mm



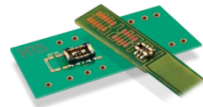
**FH58/FH58(M) Series**

Narrow Hybrid  
Width=1.7mm, 5A power

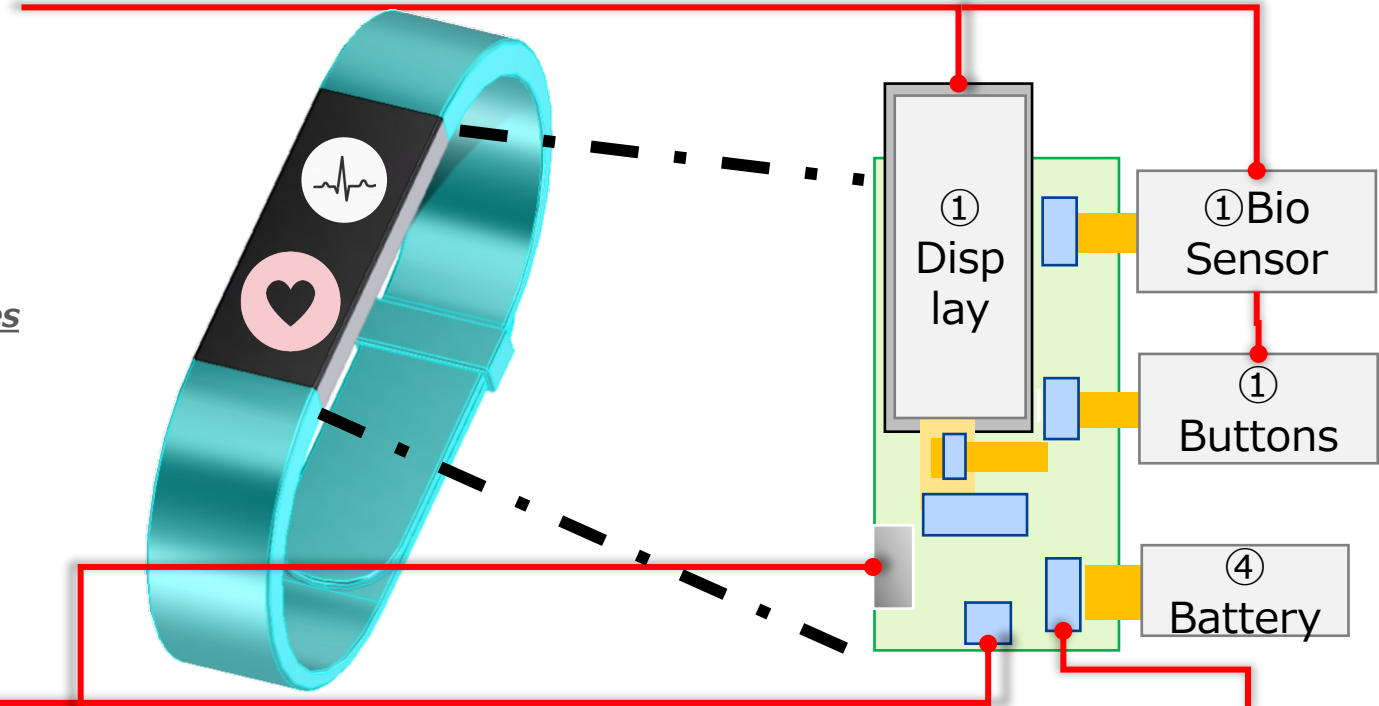


**BM28 Series**

Narrow Hybrid  
Width=1.5mm, 3A

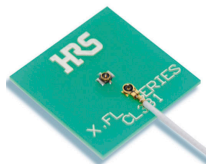


**BM29 Series**



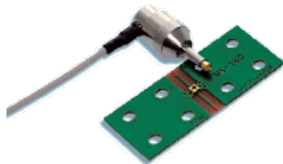
## ② Antenna

Standard RF



**X.FL Series**

Micro coaxial switch



**MS-190 Series**

## ③ I/O

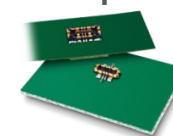
\*for charging, dock

USB Type-C  
5A Water Resistant, Waterproof



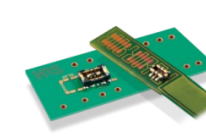
**CX Series**

High current  
15A power



**BM50 Series**

Narrow Hybrid  
Width=1.5mm, 3A



**BM29 Series**

Snap Lock, 3A  
Height 1.0mm



**DF58 Series**

## ④ Battery, Vibrator, Speaker

Click on the product for more information