

**BM28**

**USB Type-C CX**

**Battery BM25**

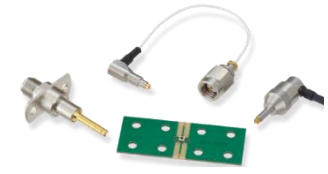
**USB Type-C**  
6A Max.



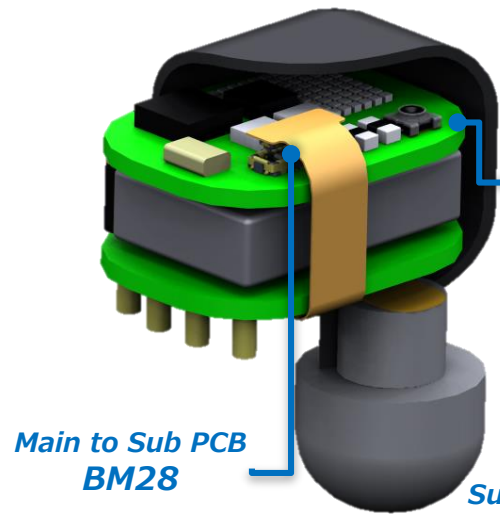
**CX Series**



**Micro Coaxial Switch**  
Height: 0.85mm



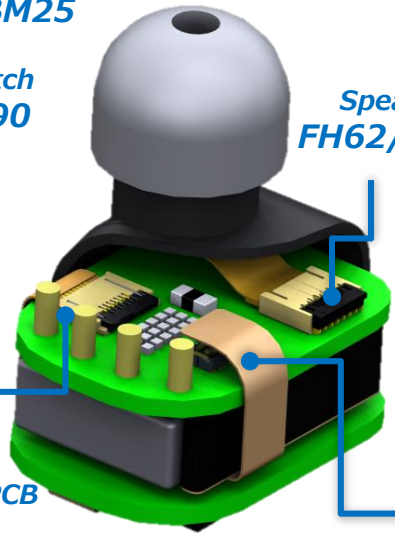
**MS-180 Series**



**RF Switch MS-190**

**Main to Sub PCB BM28**

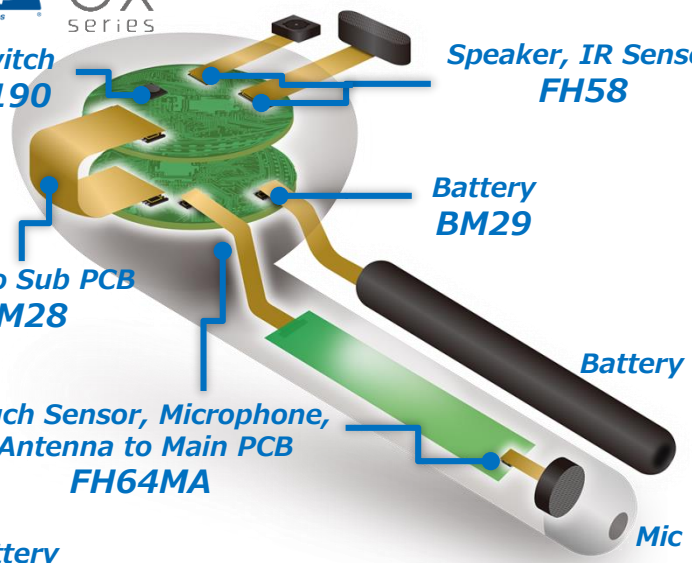
**Sub to Main PCB FH72**



**Speaker FH62/FH72**

**Main to Sub PCB BM28**

**Battery BM29**



**RF Switch MS-190**

**Speaker, IR Sensor FH58**

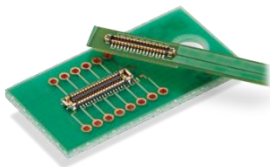
**Battery BM29**

**Touch Sensor, Microphone, Antenna to Main PCB FH64MA**

**Battery**

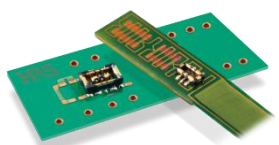
**Mic**

**Narrow Hybrid**  
Depth: 1.7mm



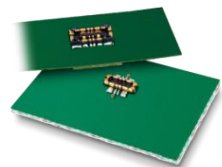
**BM28 Series**

**Narrow Battery**  
Depth: 1.5mm



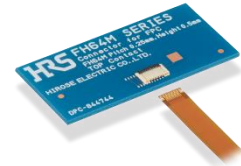
**BM29 Series**

**High Current Battery**  
10A



**BM25 Series**

**Low Profile ZIF**  
Height: 0.5mm



**FH64MA Series**

**One Action, Simple and Easy**  
Pitch: 0.25/0.3mm



**FH62/72 Series**