

① Display/Projection/Camera Connection ③ Main and I/O Board Connection

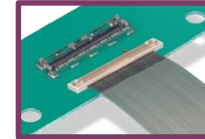
FPC Connector
(1 Piece)



FPC-to-Board
(2 Piece)

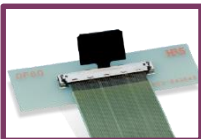


Micro Coaxial
Connector



③ Module & Main Board Connection

Micro Coaxial
Connector



② Speaker/ Microphone Connection

Wire-to-Board

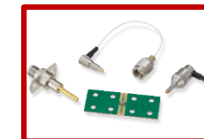


④ Interface Connection

USB Type-C



⑤ Wireless Module Connection



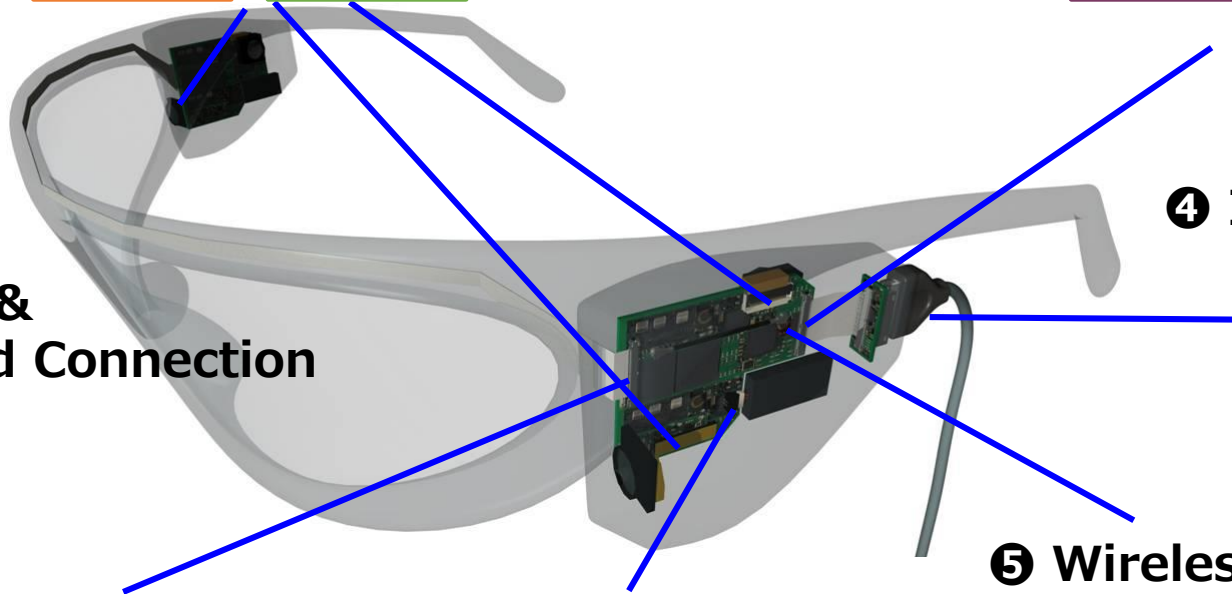
RF Switch



RF Cable Connector



FPC-to-Board
(2 Piece)



1. Display/Projection/Camera Connection (High Pin Count)

FPC Connectors (1 Piece)



FH58/M



Space-Saving,
Top/Bottom Contact
Pitch: 0.2mm
(FH58M: 0.25mm)
Height: 0.9mm
Depth: 3.1mm
(FH58A : 3.4mm)
Pin Count: 7-71pos.
(Under Development: 81)
Rated Current: 0.2A



FH62 OneAction



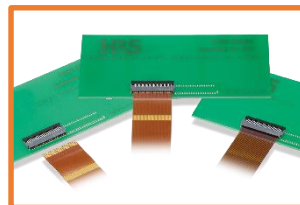
Superior Operability
(One Action)
Top Contact
Pitch: 0.25mm
Height: 1.1mm
Depth: 4.0mm
Pin Count: 13-61pos.
Rated Current: 0.3A



FH72 OneAction



Superior Operability
(One Action)
Pitch: 0.3mm
Height: 0.9mm
Depth: 3.5mm
Pin Count: 11-31pos.
(Planned Development: 7-31)
Rated Current: 0.3A



FH35C



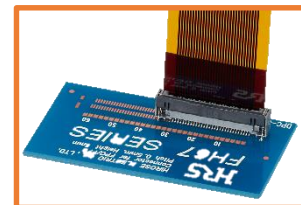
0.3mm Pitch
Standard Connector
Top/Bottom Contact
Pitch: 0.3mm
Height: 0.9mm
Depth: 4.2mm
Pin Count: 9-61pos.
Rated Current: 0.2A



FH63S OneAction



Superior Operability
(One Action)
Horizontal Mating
Pitch: 0.5mm
Height: 2.8mm
Depth: 5.15mm
Pin Count: 10-50pos.
(Planned Development: 60)
Rated Current: 0.5A

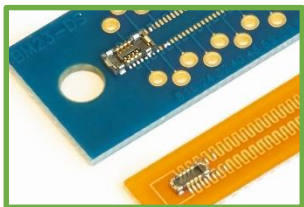


FH67 OneAction



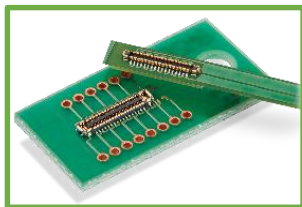
Superior Operability
(One Action)
Vertical Mating
Pitch: 0.5mm
Height: 5.2mm
Depth: 3.57mm
Pin Count: 30, 40pos.
(Planned Development: 10, 20, 50)
Rated Current: 0.5A

FPC-to-Board (2 Pieces)



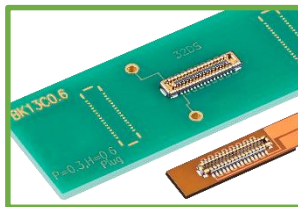
BM23FR

Small,
Multipurpose Connector
Pitch: 0.35mm
Mated Height: 0.6/0.8mm
Depth: 1.98mm
Pin Count: 6-60pos.
Rated Current: 0.3A



BM28

Low Profile, Space-Saving
Hybrid Connector up to 5A
Pitch: 0.35mm
Stacking Height: 0.6mm
Depth: 1.7mm
Pin Count: 6-60+2pos.
Rated Current: 5A for power
0.3A for signal



BK13

Low Height,
Hybrid Connector up to 5A
Pitch: 0.35mm
Stacking Height: 0.6mm
Depth: Plug 1.8mm
Receptacle 1.9mm
Pin Count: 10-60pos.
Rated Current: 5A

Wire-to-Board



DF57H



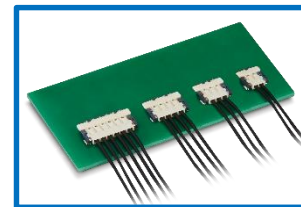
Low Profile, Snap Lock Design
Pitch: 1.2mm
Mated Height: 1.4mm
Depth: 4.65mm
Pin Count: 2-6pos.
AWG Wire: 28-34
Rated Current: 0.5-3A



DF53



Small, Low Profile
Pitch: 0.6mm
Mated Height: 1.45mm
Depth: 3.55mm
Pin Counts: 14pos.
AWG Wire: 32
Rated Current: 1.3A Max.



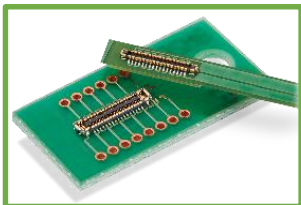
DF58



World's Lowest Profile
with 28 AWG
Pitch: 1.2mm
Mated Height: 1.0mm
Depth: 4.97mm
Pin Counts: 2-6pos.
AWG Wire: 28-30
Rated Current: 1.5-3A

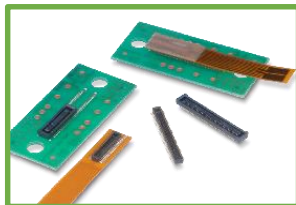
2. Speaker/ Microphone Connection (Low Pin Count)

FPC-to-Board (2 Pieces)



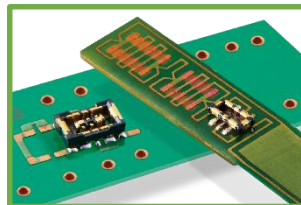
BM28

Low Profile, Space-Saving Hybrid Connector up to 5A
Pitch: 0.35mm
Stacking Height: 0.6mm
Depth: 1.7mm
Pin Count: 6-60+2pos.
Rated Current: 5A for power
0.3A for signal



DF40

Wide Stacking Height Variety
Pitch: 0.4mm
Stacking Height: 1.5-4.0mm
Depth: 3.38mm
Pin Count: 10-120pos.
Rated Current: 0.3A



BM29

Ultra Small Hybrid Connector
Pitch: 0.35mm
Mated Height: 0.6mm
Depth: 1.5mm
Pin Count: 2-24 + 2pos.
Rated Current: 3A for power
0.3A for signal

FPC Connectors (1 Piece)



FH34



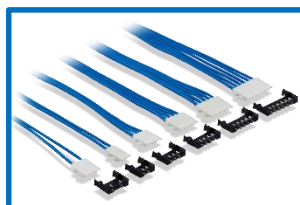
High Retention Force,
Ideal Low Pin Count
Top/Bottom Contact
Pitch: 0.5mm
Height: 1.0mm
Depth: 3.8mm
Pin Count: 4-50pos.
Rated Current: 0.5A



FH72 *OneAction* FH™

Superior Operability
(One Action)
Top Contact
Pitch: 0.3mm
Height: 0.9mm
Pin Count: 11-31pos.
(Planned Development: 7-31)
Rated Current: 0.3A

Wire-to-Board



DF57H



Low Profile, Snap Lock Design
Pitch: 1.2mm
Mated Height: 1.4mm
Depth: 4.65mm
Pin Count: 2-6pos.
AWG Wire: 28-34
Rated Current: 0.5-3A



DF52



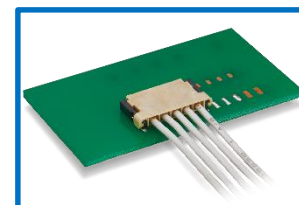
Small, High Current Capacity
Pitch: 0.8mm
Mated Height: 1.75mm
Depth: 4.10mm
Pin Count: 2-20pos.
AWG Wire: 28-32
Rated Current: 0.8-2.5A



DF53



Small, Low Profile
Pitch: 0.6mm
Mated Height: 1.45mm
Depth: 3.55mm
Pin Counts: 14pos.
AWG Wire: 32
Rated Current: 1.3A Max.



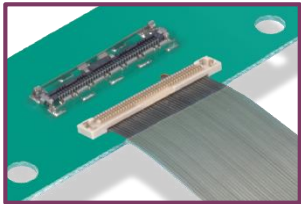
DF65



Small, High Current Capacity
Pitch: 1.7mm
Mated Height: 1.8mm
Depth: 6.3mm
Pin Count: 3-7pos.
AWG Wire: 24-28
Rated Current: 2-4A

3. Module, Main and I/O Board Connection

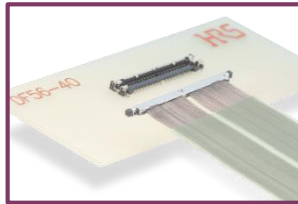
Micro Coaxial Connectors



LVDS
MIPI

DF36

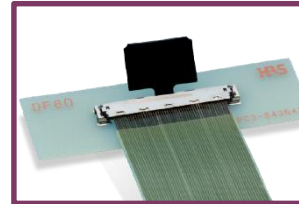
0.4mm Pitch Space-Saving Connector
Pitch: 0.4mm
Mated Height: 1.5mm
Depth: 2.8/4.4mm
Pin Count: 15-50pos.
AWG Wire: 42-46
Discrete Wire:
34 & 36 AWG, \varnothing 0.33mm Max.
Rated Current: 0.2-0.25A



LVDS

DF56

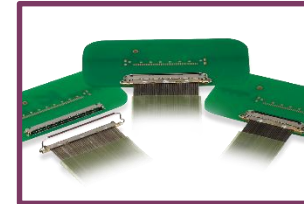
Vertical Mating, Space-Saving
Pitch: 0.3mm(Staggered)
Mated Height: 1.25/1.45mm
Depth: 2.6mm
Pin Count: 26, 30, 40, 50
AWG Wire: 42-46
Discreet Wire: 36 AWG, \varnothing 0.42 Max.
Rated Current: 0.1-0.2A



Type-C
LVDS
eDP

DF80

Space-Saving, User-Friendly Operation
Pitch: 0.5mm
Mated Height: 1.72mm
Depth: 5.1mm
Pin Count: 30, 40, 45, 50pos.
AWG Wire: 40-46
Discrete Wire:
32 & 36 AWG, \varnothing 0.5mm Max.
Rated Current: 0.1-0.5A



Type-C
LVDS
eDP
MIPI

DF81

Space-Saving with Rotary Latch,
Horizontal Mating
Pitch: 0.4mm
Mated Height: 0.9mm
Depth: 4.4mm
Pin Count: 30, 40, 50pos.
AWG Wire: 36-46
Discrete Wire:
34-36 AWG, \varnothing 0.54mm Max.
Rated Current: 0.1-0.8A

4. Interface Connection

I/O Connectors



CX90M-16P

USB Type-C Connector
USB2.0, Supports 6A
Mid-mount, 16pos.



CX90B-16P

USB Type-C Connector
USB2.0, 5A
On-board, 16pos.



CX90MWD2G-24P

Waterproof Type-C Connector
USB3.2 Gen1, 5A
IPX8, 24pos., Mid-Mount



CX90MWP1-24P

USB Type-C Connector
USB3.2 Gen1
Mid-Mount, 24pos.
Space-Saving



CX60

USB Type-C Connector
USB4 Gen2
Space-Saving,
Short Circuit Prevention Design



ZX

Micro-USB2.0 Connector
12, 16, 20pos.



ZX62W

Micro-USB2.0 Connector
Overmolded Type
Splash Resistant Receptacle



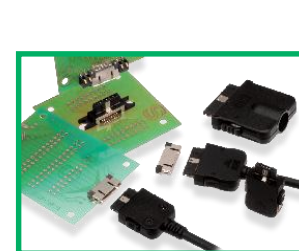
ZX360

Micro-USB3.0 Connector



LX

0.5mm Pitch,
Ultra-Low Profile
12, 16, 20pos.

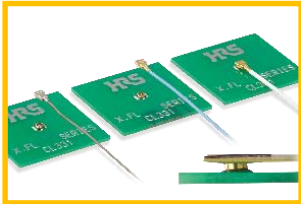


ST

0.5mm Pitch, Space-Saving
10, 18, 24, 36pos.

5. Wireless Module Connection

Miniature RF Connectors



X.FL

Superior High Frequency
Mated Height: 1.0mm Max.
Frequency: DC to 6GHz
V.S.W.R.: 1.4 Max.



X.FL (Low Loss Type)

WiGig Standard
Mated Height: 1.3mm Max.
Frequency: DC to 12GHz
V.S.W.R.: 1.7 Max.
Intel WiGig Recommended



X.FL (Board-to-FPC)

Ultra Low Profile Connector for FPC
Mated Height: 0.89mm Max.
Frequency: DC to 6GHz
V.S.W.R.: 1.5 Max.



C.FL

Micro RF Connector
Mated Height: 0.92mm
Frequency: DC to 30GHz
V.S.W.R.: 1.6 Max.



U.FL

Widely Used RF Connector
Mated height: 2.0mm Max.
or 2.4-2.5 Max.
Frequency: DC to 6GHz
V.S.W.R.: 1.5 Max.

FPC-to-Board (2 Pieces)



BM46



Multi-RF Board-to-Board Connector
Pitch: 0.35mm
Stacking Height: 0.6mm
Frequency: DC to 12GHz
V.S.W.R.: 1.6 Max.

RF Switch



MS-156C

Widely Used RF Switch
Height: 1.35mm
Frequency: DC to 11GHz
V.S.W.R.: 1.8 Max.

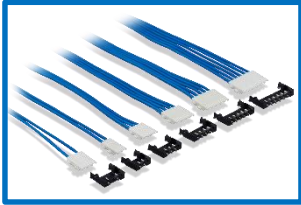


MS-180

Small Switch for Checking Terminal
Height: 0.85mm
Frequency: DC to 11GHz
V.S.W.R.: 1.4 Max.

6. Battery Connection

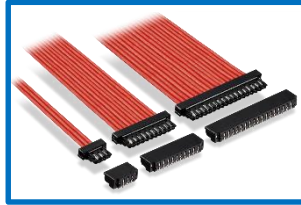
Wire-to-Board



DF57H



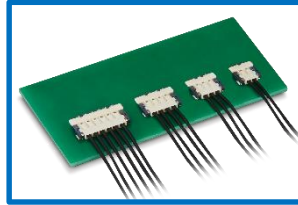
Low Profile, Snap Lock Design
Pitch: 1.2mm
Mated Height: 1.4mm
Depth: 4.65mm
Pin Count: 2-6pos.
AWG Wire: 28-34
Rated Current: 0.5-3A



DF52



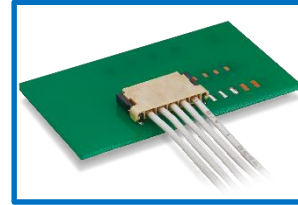
Small, High Current Capacity
Pitch: 0.8mm
Mated Height: 1.75mm
Depth: 4.10mm
Pin Count: 2-20pos.
AWG Wire: 28-32
Rated Current: 0.8-2.5A



DF58



World's Lowest Profile
with 28 AWG
Pitch: 1.2mm
Mated Height: 1.0mm
Depth: 4.97mm
Pin Counts: 2-6pos.
AWG Wire: 28-30
Rated Current: 1.5-3A

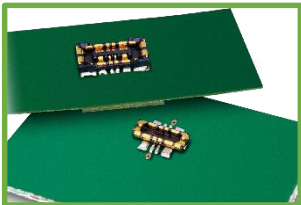


DF65



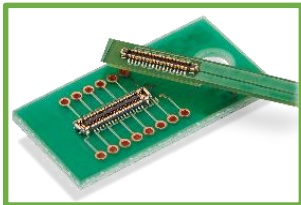
Small, High Current Capacity
Pitch: 1.7mm
Mated Height: 1.8mm
Depth: 6.3mm
Pin Count: 3-7pos.
AWG Wire: 24-28
Rated Current: 2-4A

FPC-to-Board (2 Pieces)



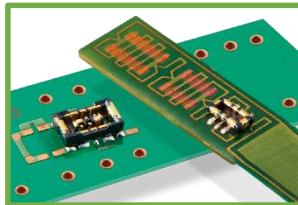
BM25

Ideal for Quick Charge
Power Connector
Pitch: 0.4mm
Mated Height: 0.7mm
Depth: 2.6mm
Pin Count: 4+2pos.
Rated Current: 10A for power
0.3A for signal



BM28

Low Profile, Space-saving
Hybrid Connector up to 5A
Pitch: 0.35mm
Stacking Height: 0.6mm
Depth: 1.7mm
Pin Count: 6-60+2pos.
Rated Current: Power 5A
Signal 0.3A



BM29

Ultra Small Hybrid Connector
Pitch: 0.35mm
Mated Height: 0.6mm
Depth: 1.5mm
Pin Count: 2-24+2pos.
Rated Current: 3A for power
0.3A for signal

