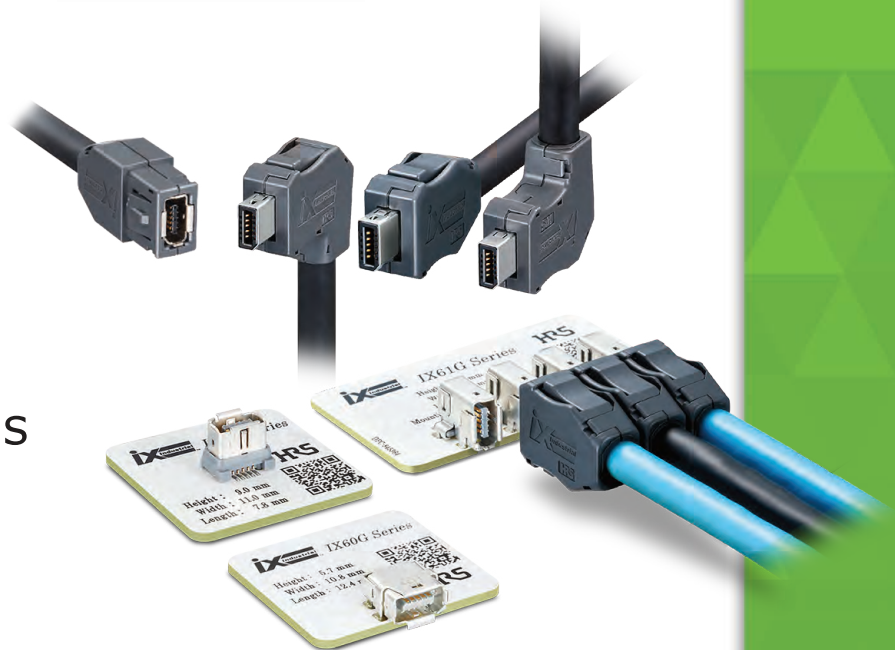




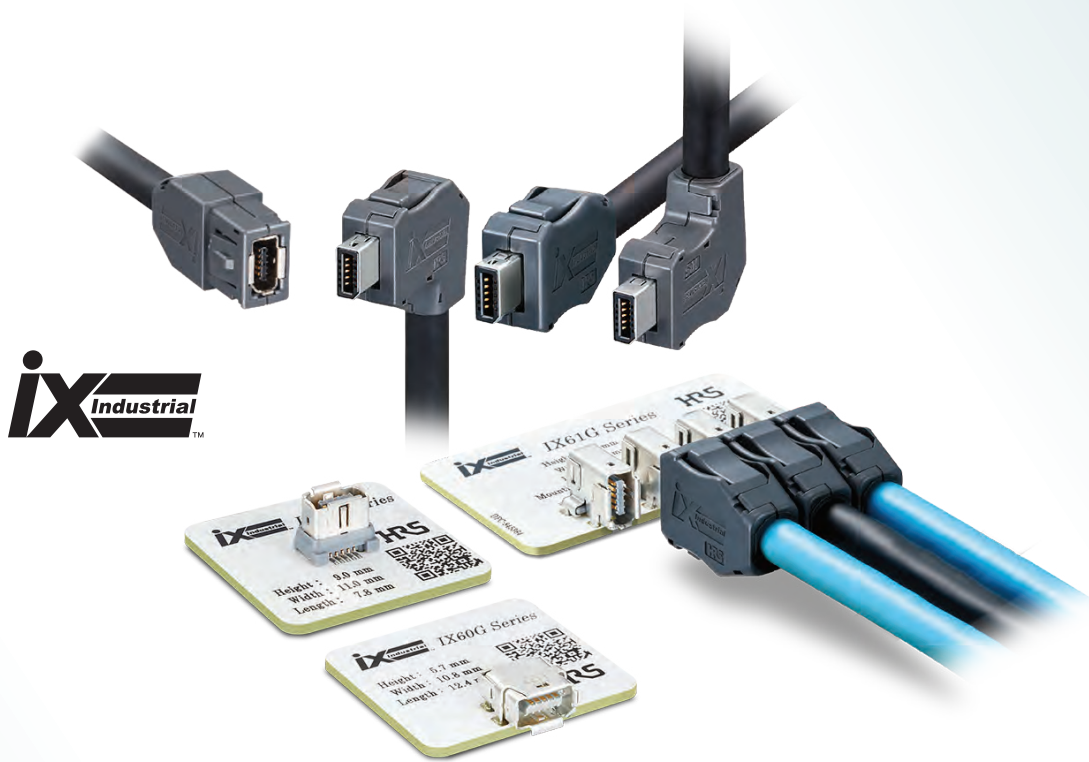
Industrial Connectors

Leading Technology
Interconnect Solutions
for Industrial Applications



Advance with ix Industrial™

The Next-Generation Ethernet Connector for Industrial Equipment



IX Series

Features

- High - Speed transmission: 10Gbps**
 - Cat.6A and Cat.5e high-speed Ethernet performance, High EMC resistance secures safe and stable data transmission
- 75% Space saving**
 - Reduce installation space with 10mm pitch mounting
 - Multiple configurations available (vertical, horizontal, right angle) with keying options
- Rugged Design**
 - Strong vibration resistance and secure locking due to unique shell design
 - 5000 Mating Cycles
- Simplified Workability Implementation**
 - Pin-in-Paste compatibility
 - Standard or proprietary cable solutions
 - Field serviceable plugs



(IEC PAS 61076-3-124)



High-Current



High-Speed



Robust

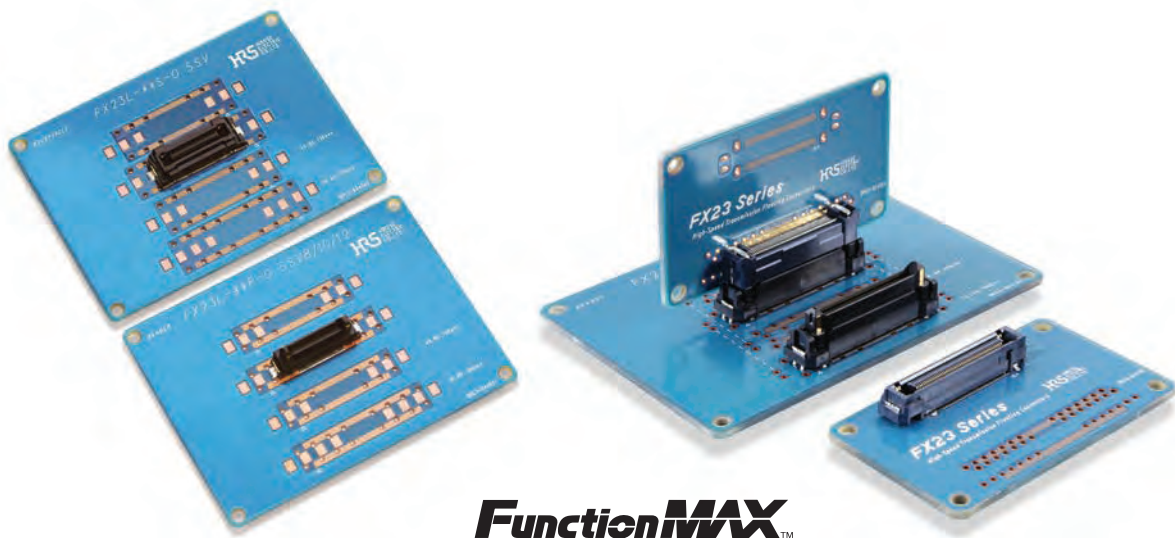
- Rated current : 1.5A
- Operating Temperature : -40 to +85°C
- Rated Voltage : 50V AC/60V DC
- No of Pos. : 10pos.

A WORLD LEADER INTERCONNECT TECHNOLOGY

Hirose provides innovative & quality solutions for your interconnect requirements. We specialize in the design, development & manufacturing of high-performance products supporting the automotive, consumer, medical, and industrial markets. With over 80 years experience, Hirose has established itself as a growing technology leader. Hirose is a \$1.2 billion company, with over 4,500 employees worldwide, supporting customers around the world.

Floating Board to Board Connector with Power Contacts

High-speed transmission 0.5mm pitch



FunctionMAX™

FX23/FX23L Series

Features

1. $\pm 0.6\text{mm}$ floating design in XY directions, ($\pm 1.2\text{mm}$ maximum float in XY directions with certain configurations) absorbs misalignment between boards
2. High-speed transmission capability (Supports up to 8+Gbps)
3. Two Power contacts on each guide post of the connector (3A/pin \times 4pins) saves boardspace
4. Stack heights from 8mm to 30mm
5. Recommended for robotic assembly



P= 0.5 mm

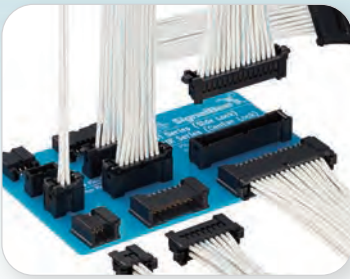


Floating



High-Speed

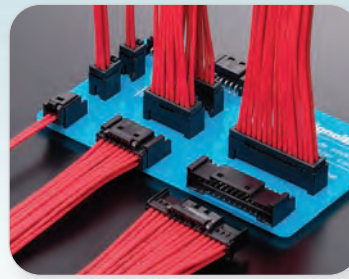
- Rated current: 0.5A/pin (signal), 3A/pin (4 power pins)
- Operating Temperature: -55C to +105C
- Rated voltage: AC - Signal: 50V AC
Power: 200V AC
DC - Signal: 100V DC
Power: 250V DC
- No of Pos.: 20/40/60/80/100/120 for signal
+ 4 for power source



DF51 Series

- Pitch: 2mm
- 22 - 30 AWG
- 2A max rated current
- 250V AC/DC
- Contact positions:
2 - 6 (single row)
4 - 30 (double row)

Part of the SignalBee connector family, the DF51 Series connector has a user-friendly positive lock that provides a clear tactile click & secures a reliable connection.



DF51K Series

- Pitch: 2mm
- 22 - 30 AWG
- 2A max rated current
- 250V AC/DC
- Contact positions:
2 - 6 (single row)
4 - 30 (double row)

The new DF51K Series features a space-saving center lock design. The user-friendly positive lock provides a clear tactile click and secures a reliable connection.



DF60 Series

- Pitch: 10.16mm
- 8 - 12 AWG
- 65A max (with AWG 8)
- 1000V AC/DC
- Contact positions:
1, 2, 3, 4, 5, 6

Positive center lock, Polarization key, 5-point contact, Extended operation temperature: -55°C to +105°C.



DF62 Series

- Pitch: 2.2mm
- 22 - 30 AWG
- 4A max rated current
- 250V AC/DC
- Contact positions:
2, 3, 4, 5, 6, 7, 13, 24

With a slim & smooth profile, this in-line series can be used in tight spaces. Features include high reliability contacts, Connector Position Assurance & a protected latch variation.



DF62W Series

- Pitch: 2.2mm
- 20 - 26 AWG
- 4A max rated current
- 250V AC/DC
- Contact positions:
2, 3, 4, 5, 6, 7, 13, 24

Slim, sleek design and smooth contour combine to complete connections in tight spaces. Features include robust contact structure, secure locking mechanism and IP67 water-resistance.



DF63W Series

- Pitch: 3.96mm
- 16 - 22 AWG
- 14A max rated current
- 630V AC/DC
- Contact positions:
2, 3, 4

A compact power connector with IP67 water-resistance performance. Environmentally sealed for high-humidity applications including refrigeration, signage & outdoor fixtures.



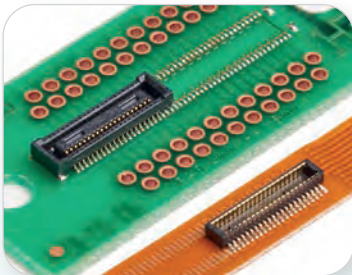


GLOBAL INNOVATIONS

Customer support is provided through all stages of development. Positioned on the forefront of interconnect technology, Hirose works closely with its customers to develop innovations in miniaturization, high-speed data transmission, signal integrity & robust mechanical design.

APPLICATIONS

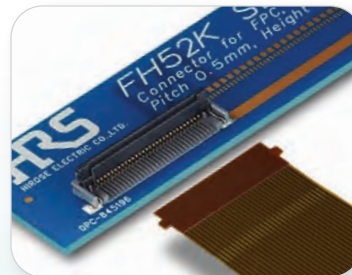
Your products demand quality and Hirose connectors provide the manufacturing precision, durability, and design intelligence that allows you to increase efficiency during installation, decrease costs, and improve your overall operations.



DF40 Series

- Pitch: 0.4mm
- Stacking heights: 1.5, 2.0, 2.5, 3.0, 3.5, 4.0mm
- Depth: 3.38mm
- Contact positions: 10-100

High contact reliability, positive mated click. Many variations including locking type, high operating temp., and shielded design.



FH52K Series

- 125°C Heat Resistance
- Robust Lock Structure
- Easy Visual Inspection
- Enhanced PCB Retention force by L-Shaped Metal Fittings

0.5mm Pitch, 2mm Height Bottom Contact ZIF Connector that fits into industrial applications with robust housing and high operating temperature.



LF Series

- Small, robust design
- Waterproof: IP67/IP68 Compliant
- Easy shielding termination
- Bayonet lock
- Power/signal hybrid type

Shielded, smaller waterproof connector with many variations including high-speed transmission and power/signal hybrid type.



U.FL Series

- Space-saving design
- Solderless connection type U.FL(A)
- RF Performance (up to 18GHz)
- Supports automatic mounting
- Clear tactile click

Lightweight micro SMT coaxial connector, 1.9mm to 2.4mm mated height.

INDUSTRIAL CONNECTOR INNOVATION



HIROSE Electric Americas
U.S.A. Headquarters Chicago
2001 Butterfield Road, Suite 1900,
Downers Grove, IL 60515
P: 630.282.6700 • F: 630.963.0507



San Jose Office
2841 Junction Ave, Suite 200,
San Jose, CA 95134, USA
P: 408.253.9640



Detroit Office
17197 Laurel Park Dr., Suite 253,
Livonia, MI 48152, USA
P: 734.542.9963



Boston Office
40 Shattuck Rd, Suite 215,
Andover, MA 01810, USA
P: 978.662.5255



Southern CA Office
7700 Irvine Center Drive, Suite 670,
Irvine, CA, 92618
P: 949.317.0562



Dallas Office
5550 Granite Parkway, Suite 255,
Plano, TX 75024, USA
P: 734.542.9963



Seattle Office
15809 Bear Creek Parkway, Suite 120,
Redmond, WA 98052
P: 206.379-8567



RoHS - We are committed to the development and manufacture of world-class products without sacrificing the health of people & the environment. Hirose manufactures products that are compliant with RoHS directives.



Tampa Office
1646 W Snow Avenue, Suite 281
Tampa, FL 33606
P: 857.270.8662



Scan the QR code for a digital brochure and additional information on Industrial Connectors

Visit us at...

