

Wire Snap Lock  
3A Max.



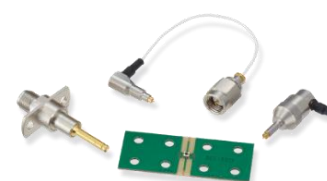
**DF57 Series**

USB Type-C  
6A Max.

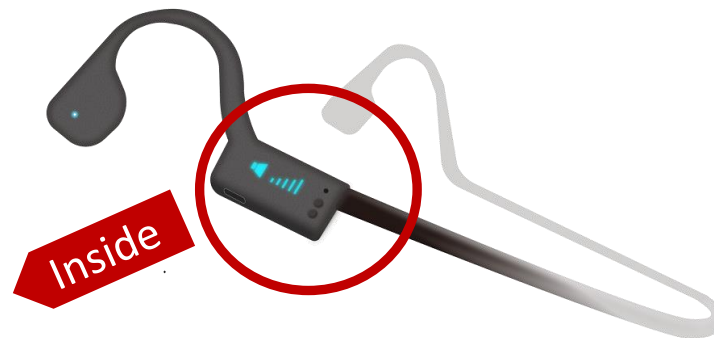
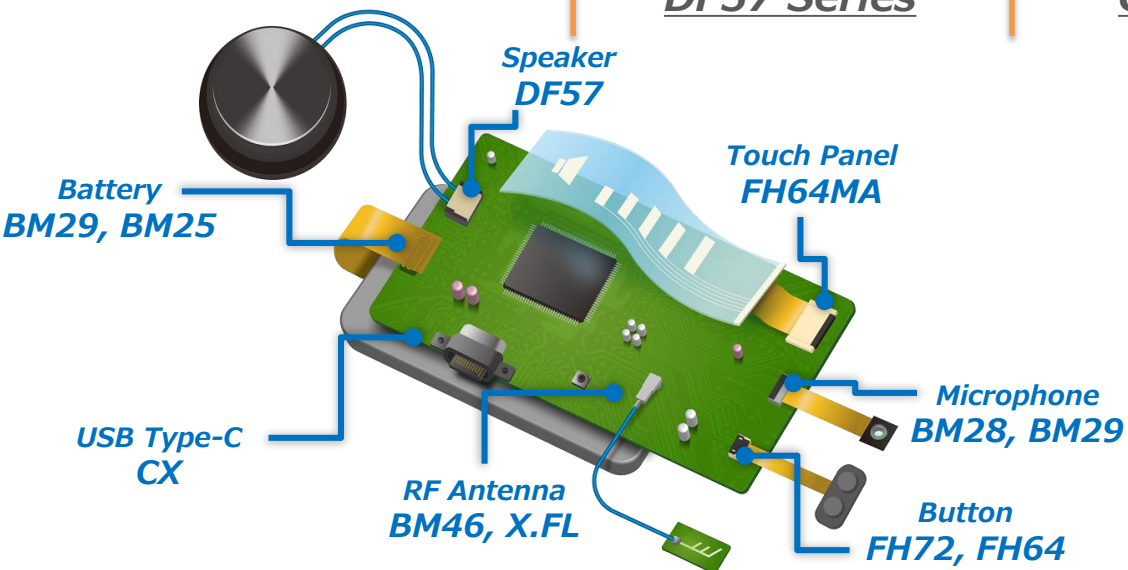


**CX Series**

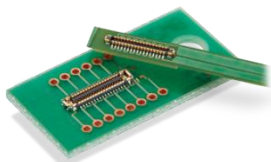
Micro Coaxial Switch  
Height : 0.85mm



**MS-180 Series**

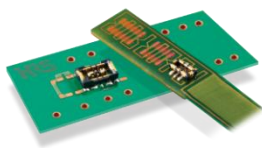


Narrow Hybrid  
Depth : 1.7mm



**BM28 Series**

Narrow Battery  
Depth : 1.5mm



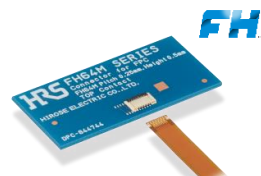
**BM29 Series**

High Current  
Battery  
10A



**BM25 Series**

Low Profile ZIF  
Height : 0.5mm



**FH64MA Series**

One Action,  
Simple and Easy  
Pitch : 0.25/0.3mm

OneAction FH™



**FH62/FH72 Series**