

## 1 Display, Speaker, Sub to Main, Key Pad Connection



FH34 Series



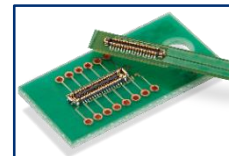
FH62/FH72 Series

Low Profile ZIF,  
Height : 0.5mm



FH64MA Series

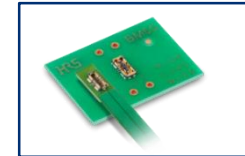
Narrow Hybrid,  
Depth : 1.7mm



BM28 Series

## 2 Battery Connection

High Current 15A  
Board-to-Board



BM50 Series



## 3 Interface Connection (In Socket Device)

Compact,  
Vertical, Mid-Mount

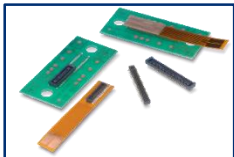


CX Series

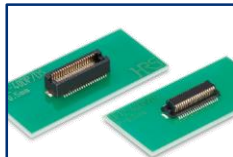
## 4 Scan Camera Board Connection

Wide Variation  
Height : 3.0-5.0mm

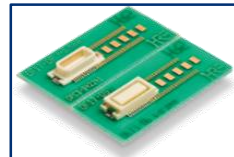
Wide Variation  
Height : 4.0-8.0mm



DF40 Series



DF12N Series



DF17 Series

## 5 Antenna Connection

Standard RF



U.FL(A) Series

RF Switch



MS-156C Series

Multi RF  
Board-to-Board



BM46 Series



\*The CES Innovation Awards are based upon descriptive materials submitted to the judges. CTA did not verify the accuracy of any submission or of any claims made and did not test the item to which the award was given.