

# Handy Terminal POS

## Display, Sub to Main, Key Pad

Standard ZIF  
Pitch : 0.5mm



[FH34 Series](#)

One Action Lock  
Pitch: 0.25mm/0.3mm

**OneAction** FH™



[FH62/FH72 Series](#)

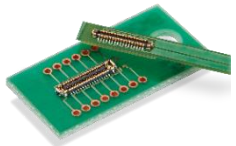
Low Profile ZIF,  
Height : 0.5mm

**FH**



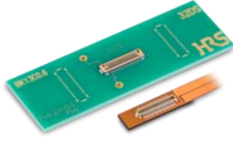
[FH64 Series](#)

Narrow Hybrid,  
Depth : 1.7mm



[BM28 Series](#)

Narrow Hybrid,  
Depth : 1.9mm



[BK13 Series](#)

## Interface (In Socket Device)

Compact,  
Vertical, Mid-Mount, Top-Mount



[CX Series](#)

## Battery

High Current  
10A



[BM25 Series](#)

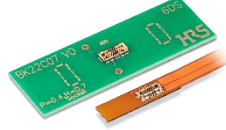
## FPC-to-Board

High Current  
15A



[BM50 Series](#)

High Current  
15A



[BK22 Series](#)

## Antenna

Standard RF



[U.FL Series](#)

RF Switch



[MS-156C Series](#)

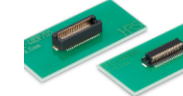
## Scan Camera Board

Wide Variation  
Height : 1.5-7.0mm



[DF40 Series](#)

Wide Variation  
Height : 3.0-5.0mm



[DF12N Series](#)

Wide Variation  
Height : 4.0-8.0mm



[DF17 Series](#)

Small floating  
Height : 3.0-4.5mm



[BM54 Series](#)