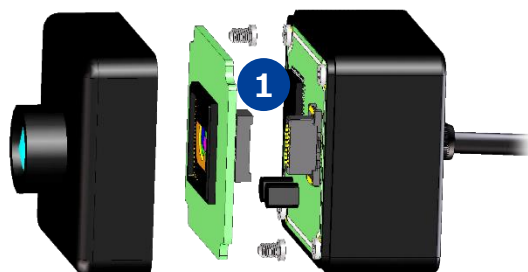
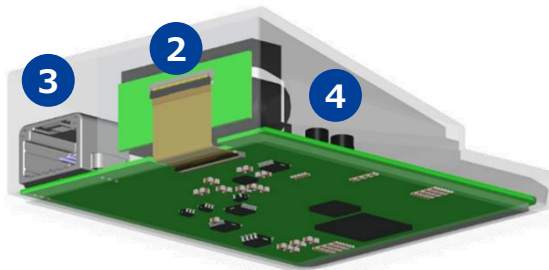


View Camera



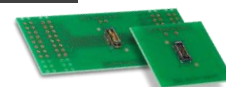
Sensing Camera



1. Internal Connection (Floating Board-to-Board, Board-to-Board(FPC))

Floating Design

125℃

**BM54**

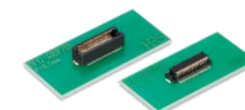
Compact
Pitch: 0.4mm
Stacking Height: 3.0-4.5mm

125℃

**DF40T**

Low Profile,
Narrow Pitch: 0.4mm
Stacking Height: 1.5-7.0mm
1.5 (Shielded Type: DF40GT)

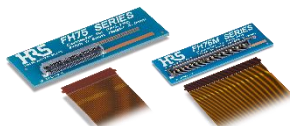
105℃

**DF12N**

Space-saving Design
Pitch: 0.5mm
Stacking Height: 3-5mm

2. Internal Connection (FPC/FFC, FPC-to-Board)

125℃

**FH75/FH75M FH**

Two-point Contact
Pitch: 0.5/0.4mm
Height: 2.0mm
FH75M: 100pos.

Best Selling

125℃

**FH52K FH**

Pitch: 0.5/1.0mm
Height: 2.0mm

Top/Bottom Contact

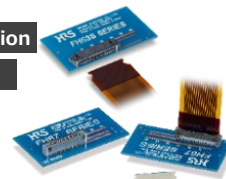
125℃

**FH79 FH**

Pitch: 0.3mm.
Height: 1.2mm

One Action

105℃

**FH63S/FH67 FH**

Pitch: 0.5mm
Height: 2.8, 5.2mm

Top/Bottom Contact

125℃

**FH69 FH**

Independent
Two-Point Contact
Pitch: 0.5mm
Height: 2.3mm

125℃

**FH65 FH**

Low Profile,
Space-saving Design
Pitch: 0.5mm
Height: 1.2mm

125℃

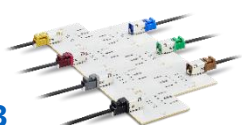
**ZK1**

Pitch: 2mm
Rated Current: 1A
No. of Pos.: 32

3. Interface Connection (High Speed Wire-to-Board, Wire-to-Board)

Noise Resistant

105℃

**GT43**

Compact,
One Step Crimping
Frequency: 3GHz
Coaxial Cable: 1.5D

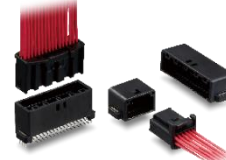
Robust

125℃

**ZE05**

Rated Current: 2A
(All Pins Power Supply)
No. of Pos.: 2-24
AWG: 20-26

105℃

**GT25**

Rated Current: 3A
(All pins Power Supply)
No. of Pos.: 8-40
AWG: 20-26

105℃

**POK15**

Wire-to-Board
Mated Height:
14mm
V.S.W.R.:
1.5 Max. (0 to 3GHz)

105℃

**POK16**

Board-to-Board
Mated Height:
7.4mm
V.S.W.R.:
1.5 Max. (0 to 3GHz)

105℃

**POK19**

Board-to-Board,
Wire-to-Board
Mated Height: 9, 12mm
V.S.W.R.:
1.5 Max. (0 to 6GHz)

105℃

**POK22**

Floating Design
Mated Height: 16.45mm
V.S.W.R.:
1.49 Max. (0 to 6GHz)

4. Internal Connection (Coaxial)